

untitled (October)
for violin, field recordings, and the presence of the room

2023

Andrew Maxbauer

for Noah Jenkins

Instrumentation & Sound Sources:

- Violin
- Three stereo ambient field recordings made near the performance venue at approximately the same time of day as the concert
- Pre-recorded violin, with the presence of the room (recordings from the premiere were used during the second performance)
- Acoustic presence of the performance space

This work was created for Tritriangle, a non-commercial performance and living space in Chicago.



Arrangement

CTA Blue Line
(outside)



field recording 3
loudspeakers placed at ear level



refrigerator (compressor)

 field recording 2
 loudspeakers placed on the floor

violin

 
field recording 1
loudspeakers placed ear level

audience

turtle tank: heard through a slightly open door

Performance Notes

Violin

- Scordatura
 - IV^c. tuned down one whole step to F
 - III^c. tuned down one half step to D^b
 - Tuning should be imprecise

 - The fingered pitches are notated in the score.
- A small strip of felt must be placed under the strings near the nut to dampen the sound of the strings.
- The bow stick and hair are used simultaneously. Rosin should be applied to the stick to make it more present in the sound.
- The dotted slur markings indicate an even slower bow speed than the incredibly slow speed elsewhere in the piece. This is not a timbral change alone; it should also invoke a degree of temporal friction within the work, temporarily resisting the pace established by the measured time and the relatively constant bow speed throughout the rest of the work.

field recording 1

" 2

" 3

*from nothing, barely heard
the appearance and disappearance of every recording must be veiled*

room presence

10'

2

3

1

2

3

20'

1

2

3

2

3

legno e crini, incredibly light and slow

30'

IIIc.

violin



from nothing, barely heard

the appearance and disappearance of every sound must be veiled

1

2

A musical staff in treble clef. The key signature changes from C major to one sharp (F#) at the beginning of the staff. The word "slower" is written above the staff with a dotted line arching over it. The word "sim." is written above the staff with a dotted line arching over it. There are some faint markings on the staff, including a sharp sign and a double bar line.

1

3



40'

1

2

3



1

2

A musical staff with a treble clef. Above the staff, there is a dotted line that starts at a high pitch and gradually descends. Below the staff, there are three horizontal lines, possibly representing a chord or a specific interval.

1

2

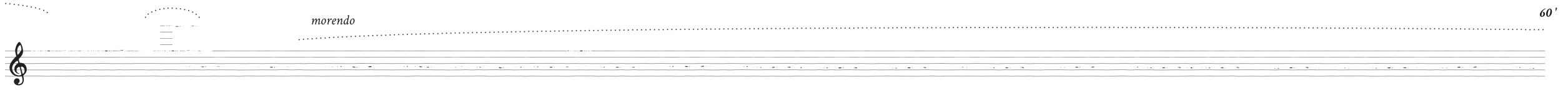


1

2

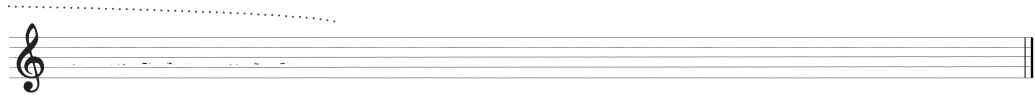
3

morendo 60'

A musical staff with a treble clef on the left. Above the staff, there is a dotted line that starts on the left, has a small arch-like shape above it, and then continues as a straight dotted line across the page. The word "morendo" is written in italics above the staff, and "60'" is written at the far right end of the staff.

2

3



3